

An invitation to apply for Superintendent

# VALLEY SCHOOL DISTRICT



## BOARD OF DIRECTORS

William Wilson, President | Doug Elledge, Vice-President  
Nancy Cocroft | Paul Voelker | Crystal Hubert



## OUR COMMUNITY

Like many rural towns, Valley is a small community with a big heart filled with both area newcomers and multi-generational families. Located 40 miles north of Spokane in a pastoral valley hugged by thick forests, Valley is less than an hour drive from the heart of Spokane and alternatively, boundless recreational opportunities in close by mountains, lakes and national forests, providing the best of both worlds. Beautiful Waitts and Jump Off Joe lakes sit just down the road, and neighboring first-class ski resort and 27-hole golf course entice family activity year-round.

Built on a history of natural resource-based economy, family-owned local and regional businesses provide employment for Valley area residents. The nearby silica plant produces some of the highest quality golf course bunker sand in the world. Strong logging, aggregate and concrete, excavation, and construction businesses abound. Valley's core group of volunteers share a vision of enhancing community gathering places, evident in refurbished and expanded fairgrounds, Valley Square, and the recent relocation and restoration project of the circa 1900's Little White Schoolhouse.



## DETAILS

The Valley School District has a strong staff and programs that are designed to meet the needs of all of its valued students. The shared goal of all of the educational programs of the Valley School District is to provide a positive educational experience for all students to assure they develop skills, competencies and attitudes fundamental for contributing and responsible citizens.

More information at [www.valleysd.org](http://www.valleysd.org)

### LOCATION

Valley, Washington

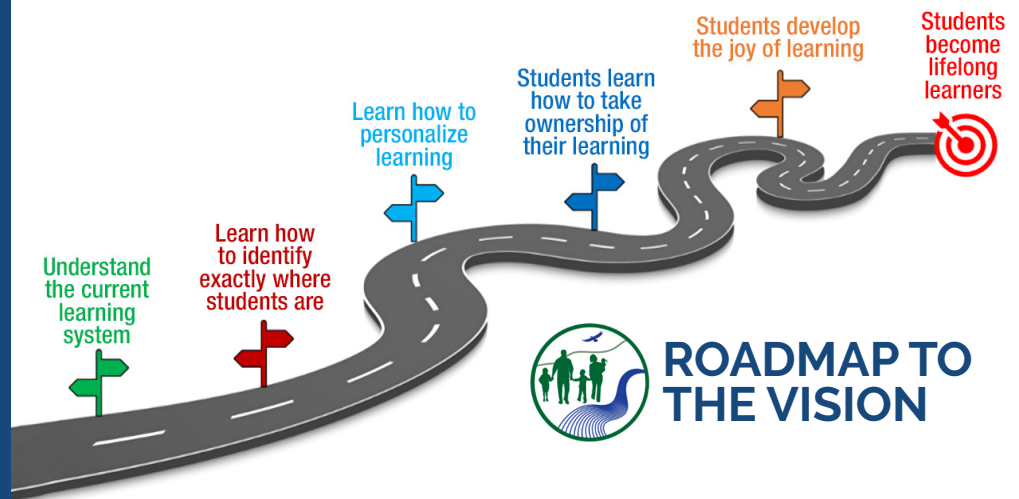
### ENROLLMENT

TK-8	180
9-12	62
CVA	864
VELC	48



## OUR SHARED VISION

Where every student becomes a lifelong learner.



We are committed to Improving the Lives of Children and Families, and we observe both **operating** and **ethical** principles.

### OPERATING PRICIPLES

Communication  
Teamwork  
Accountability  
Continuous Improvement

### ETHICAL PRICIPLES

Student Centered  
Family Oriented  
Respect  
Positivity  
Integrity  
Trust





## OUR PROGRAMS

### VALLEY EARLY LEARNING CENTER

VELC offers preschool and childcare services in a learning-rich program focusing on school readiness skills. VELC strives to create a love of learning in young children that builds a strong foundation for future academic and life success. The program provides comprehensive, low to no-cost high-quality preschool for children ages 3-5 and recently added a transitional kindergarten class. As the largest year-round licensed childcare provider in Stevens County, well-trained staff care for youngsters from age one up to age twelve in the before/after school program. The center provides special services, transportation, meals and summer camps; and extends vital family support services to local families through its ECEAP program.

### VALLEY K-8 SCHOOL

In operation since 1884, Valley School's long tradition of student-centered academic programs thrives in its remodeled and expanded facility, providing a stable environment for student learning, social development, and creativity. The school mascot is the majestic eagle, and intrinsic motivational strategies engage students through the "S.O.A.R." program and activities, advancing citizenship through the core values of Safety, Ownership, Achievement, and Respect.

### PAIDEIA HIGH SCHOOL

Paideia, pronounced "pie-dee-ah," is an innovative, high school cooperative program joined by several local non-high districts. The foundation of PHS is based on the Paideia Proposal concept developed by Mortimer Adler, which strives for the best education for all. Established in 2010 as the first of its kind in Washington, Paideia offers an academically challenging learning environment with small class sizes, team teaching, and multi-disciplinary classes. During weekly seminar, students are encouraged to think critically, ask insightful questions, and speak eloquently on a wide variety of subjects. PHS supports unique opportunities for individualized learning, growth and achievement.

### VL TRANSPORT CENTER

Established in 2006, the VL transportation cooperative provides fleet management and maintenance services to local school districts. Featuring a fully equipped maintenance shop and bulk purchasing of fuel, lubricants and parts, VLTC supports fiscally sound and dependable student transportation services. The VL Transport Center offers a training/meeting room equipped with audio/visual equipment, kitchen and public restrooms for use by school and community groups, and regional or state agencies.

### COLUMBIA VIRTUAL ACADEMY

CVA offers families an alternative approach to educating students outside of the traditional brick and mortar classroom. Established in 2006, CVA is an accredited online public K-12 program available to any Washington State resident, provided through a partnership between Valley and Kettle Falls school districts. CVA offers well-evaluated curriculum options and resources as well as quality online courses. CVA's personalized approach accommodates diverse family circumstances with customizable learning plans guided by certified teachers and tailored to a student's unique learning styles and needs.



## QUALITIES & QUALIFICATIONS

- Build upon Valley School District's focus on the shared vision statement (Where every student becomes a lifelong learner) and unpack the mile markers to cement a strategic plan for the next 3-5 years.
- Continue the district's commitment to Improvement Science, David Langford's Quality Learning and System of Profound Knowledge.
- Possess knowledge, understanding and support of innovative educational practices and programs, including ALE, that meet the needs of diverse learners and the choices families wish for their children's education.
- Provide an open and collaborative leadership style that fosters a sense of teamwork, common purpose, and shared commitment to the district's vision.
- Understand the nature of small, rural schools, communities and lifestyles.
- Demonstrate ability to lead a complex, goal-focused organization, delegating management tasks as appropriate, and holding him/herself and others accountable for quality results.
- Show familiarity with school law, finance, and curriculum; school and district improvement; student discipline and the legislative process.
- Set and share personal goals and articulate a unified vision that accounts for the current strengths of the Valley School District, and that values the inclusion of our talented staff, families and community members.
- Continue the district's prudent fiscal management practices and provide effective advocacy with elected officials for ample school funding.
- Possess a master's degree, and Washington State Superintendent Certification.

## APPLICATION REQUIREMENTS

- Formal letter of application that addresses the qualities and qualifications outlined in the position brochure
- Completed Valley application form
- Current resume/vita
- At least five current letters of recommendation

## SEARCH CALENDAR

**May 20, 4:00pm** Application deadline.

**May 20 - May 24** Screening & reference checks.

**To Follow** Interview Process.

**July 1** Superintendent begins.

## COMPENSATION

The school board will negotiate a multi-year contract with a salary based on experience and qualifications that is competitive with districts of similar size. An appropriate benefit package will be provided.

The superintendent will be expected to become an active and engaged member of the Valley community.

## APPLICATIONS AND ALL INQUIRIES SHOULD BE ADDRESSED SOLELY TO:

Dr. Michael Dunn, Superintendent

Work: 509.789.3500 Cell: 509.701.1742

Address: NEWESD 101, 4202 S Regal St, Spokane, WA 99223

Email: mkempel@esd101.net

The Valley School District Board of Directors reserves the right to consider any candidate until a Superintendent is hired. Valley School District is an affirmative action/equal opportunity employer.